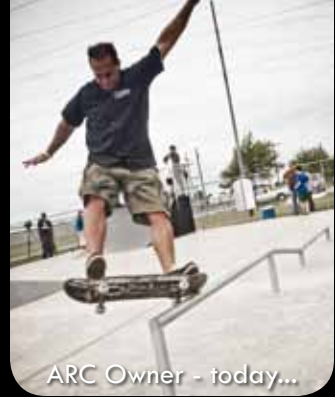


PRODUCT CATALOG

American Ramp Company



ARC Owner - 1989



ARC Owner - today...



ARC



Did you know?

AMERICAN RAMP COMPANY...

- Is skater owned and operated
- Is the world's largest skatepark provider
- Has designed thousands of skateparks and offers free customized designs and quotes
- Has built 2,000+ parks worldwide including Hong Kong, Saudi Arabia, England, China, Japan, Canada, Guam, United Arab Emirates, Taiwan, Ireland, Israel, Spain, Iceland, Turkey, Germany, Puerto Rico, Australia, Dominican Republic, Egypt, Poland, Norway, and the US
- Is the only skatepark company that offers every build option: precast and poured-in-place concrete, steel, wood, composite, and fiberglass
- Offers free on-site consultation and project facilitation
- Controls all aspects of fabrication to guarantee the highest quality and competitive pricing
- Has a 57,000 square foot facility that contains a state of the art fully automated concrete batch plant, 4,000 watt laser table, CNC router, CNC brake press, tooling center, complete fabrication shop and much more
- Any municipality can avoid the bid process and buy direct utilizing one of ARC's state or national purchasing contracts?
- Employs a team of engineers and can provide location specific stamped construction drawings in all 50 states



Contents

| |
|--|
|  <p>PRO All steel system</p> <p>Municipality Favorite!</p> <p>4</p> |
|  <p>X Steel frame/Skatelite surface</p> <p>8</p> |
|  <p>skatelite Wood frame/Skatelite surface</p> <p>12</p> |
|  <p>SOLO G2 PRE-CAST CONCRETE Precast concrete</p> <p>Municipality Favorite!</p> <p>16</p> |
|  <p>REPLICA Series Famous skate spots</p> <p>24</p> |

800.949.2024
info@americanrampcompany.com
www.americanrampcompany.com





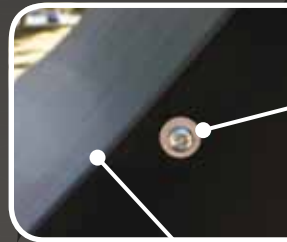
The world's most popular ramp system just got better! ARC's revamped Pro Series MX has all the same features that helped earn its place as a municipality favorite with the added benefits of galvanized steel before finish application and a new tougher color scheme. This all-steel system is virtually maintenance free and sure to retain its place as the most popular ramp system for years to come.

- 20-YEAR WARRANTY
- FASTENER FREE RIDING SURFACE
- 3/16" MAXGRIP™ STEEL SURFACE



THICK 3/16" LASER CUT FRAMEWORK

By using laser table technology to cut our thick framework, we are able to hold incredibly tight tolerances which enables us to maintain perfect ramp geometry. This also ensures that each ramp section fits together perfectly for a seamless feel and appearance. (ASTM A1011/A653)



TAMPER-RESISTANT STAINLESS STEEL HARDWARE

All hardware used is stainless steel and the pin-hex head bolts ensure that they are only removed when you decide. (ASTM F593)

THICK 3/16" STEEL RIDING SURFACE

The riding surface is guaranteed not to crack, dent, chip, warp, or ever need replacing. Combine this with the corrosion protection of galvanized steel and the perfect traction of MaxGrip™ paint and it's easy to see why this surface is a maintenance department's dream come true. (ASTM F2334-09-4.1)



HOT-DIP GALVANIZED COPING/GRINDRAILS

The galvanized coating ensures that even after years of grinding, these areas will still look great and be free of rust. (ASTM F2334-09-5.4)

MAXGRIP™ POLYESTER POWDERCOAT

We have done extensive research to formulate a paint that provides the perfect traction for the action sports industry. The MaxGrip™ surface is applied on top of the galvanized ramp sections creating the ultimate combination in corrosion protection and grip. (ASTM D2794/D3363/B117)



PRO Series

Municipality
Favorite!



FASTENER FREE RIDING SURFACE

All factory welding is done from the underside of each ramp therefore no fasteners are required to attach the riding surface. The result is a smooth ride without the worries of screws backing out, which can create hazardous riding conditions and increased maintenance. (ASTM F2334-09-5.5)

BEVELED LEADING EDGE

We take an extra step and bevel down the leading edge to make the transitions so smooth the rider glides on and off the ramps with ease. (ASTM F2334-09-5.7.1)

NO SEPARATE APPROACH PLATE

Approach plates create a seam that runs perpendicular to the skate flow which can be bothersome and even unsafe if the materials shift over time. Because the riding surface of the Pro Series also serves as the transition from the ramp to the concrete, there is no need for a separate approach plate. (ASTM F2334-09-5.7)



VERTICAL BALUSTER GUARDRAILS

Hot-dip galvanized steel guardrails are tough and corrosion resistant. The vertical design increases visibility, allows airflow, and minimizes the likelihood of climbing. (ASTM F2334-09-5.1)



13-GAUGE GALVANIZED SOLID STEEL ENCLOSURES

Optional enclosure panels create a more finished look, limit access to the underside of the ramps, and eliminate the accumulation of trash and debris under the ramps. (ASTM A1011/A653)



POLAND



IRELAND



FLORIDA



PRO PORTABLE SKATEPARK SYSTEM

The Pro Portable skatepark line allows communities to easily set-up professional grade skatepark equipment on unused hockey rinks during the summer season, tennis and basketball courts, or any paved area. The Pro Portable equipment is engineered and designed with structurally reinforced fork-lift channels which allow for easy placement and removal, and includes all the features that make the Pro Series MX a municipality favorite. Check out all the designs at americanrampcompany.com



- REINFORCED FORKLIFT CHANNELS
- SET-UP ON HOCKEY RINKS DURING SUMMER SEASON



Sample Designs

Download high-res images, videos and more of these designs at americanrampcompany.com



"The equipment is cost effective and well built. Working with ARC for the last four years during our planning stages, have been rewarding and informative. Anytime we needed answers or changes to our design, they stepped up with no questions and took care of business." Paula - Chairman of Local Skateboarders, TX

"It's almost like you guys are right here in town with us, and like this is the only park you are working with." BJ - Chief of Police, IL



\$300K
150'x100'
NIGHT VIEW



\$400K
135'x115'





The X-Series features a triple-layer system with an interchangeable riding surface. ARC is the only company to offer a true triple layer system making the X-Series the strongest and most durable ramp system of its kind on the market today. The acoustical underlayment allows you to choose any surface style while providing a quieter skate experience. Also, Our exclusive bolt through design and stainless steel fasteners allows the surface to be replaced or changed with minimal effort. If you are looking for a Skatelite Pro™, stainless steel, or Ramp Armor® riding surface with a steel framework and low maintenance, the X-Series is your ramp.

- UNI-FORM COPING SYSTEM
- TRIPLE LAYER CONSTRUCTION
- INTERCHANGEABLE RIDING SURFACE

TRIPLE LAYER SURFACE

1st Layer:

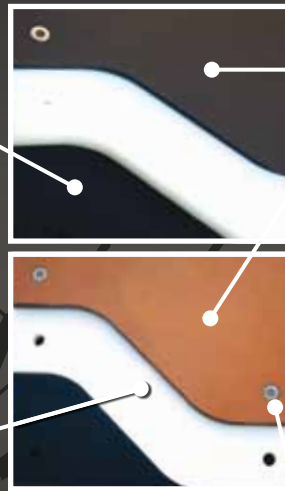
Solid sheet of 12-gauge galvanized steel provides outstanding support and is key in our advanced bolt-through design. (ASTM A1011/A653)

NOTE: ARC is the only manufacturer to add this extra layer of support. This layer is critical because it dramatically increases strength and reduces surface deflection which means that Skatelite Pro™ or Ramp Armor® riding surface will last longer.

2nd Layer:

Solid core HD Polyethylene is corrosion resistant and serves as a buffer and sound dampener between the finish layer and the steel substrate. (ASTM D256/D638)

NOTE: Solid core HDPE doubles the impact strength of Skatelite Pro™ when compared to foam core HDPE used by the competition.



3rd Interchangeable Layer:

- MaxGrip™: 12-gauge galvanized steel coated with our exclusive MaxGrip™ finish. (Stainless steel optional.) (ASTM A1011/A653)

NOTE: We use galvanized steel rather than standard black steel and zinc primer used by the competition. This is important because the galvanized coating will not scratch off and rust over time like zinc primer.

- Phenolics (Ramp Armor®, Skatelite Pro™, Ramp X): Paper based phenolic resin surfaces available in black or tan. (ASTM D638/D790)

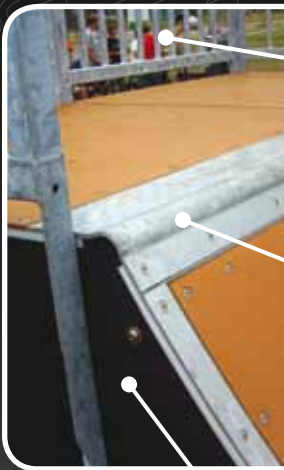
NOTE: Ramp Armor® has twice the resin content of Skatelite Pro™ which makes it absorb less water, increases strength, and lasts longer in a municipal skatepark.

TAMPER-RESISTANT HARDWARE

All hardware used is stainless steel and the pin-hex head bolts ensure that they are only removed when you decide. (ASTM F593)



X Series



VERTICAL BALUSTER GUARDRAILS

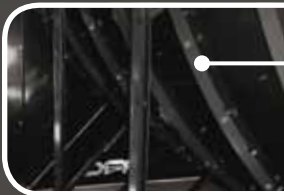
Hot-dip galvanized steel guardrails are not only tough and corrosion resistant, but the vertical design increases visibility, allows airflow, and minimizes the likelihood of climbing. (ASTM F2334-09-5.1)

GALVANIZED UNI-FORM COPING SYSTEM

We begin with a piece of steel plate and form it to have the same profile as 2-3/8" pipe. The 1/4" coping reveal is guaranteed since it is not dependant on the framework, which will expand/contract with the weather conditions, and the riding surface is protected by steel behind and below the coping radius. (ASTM F2334-09-5.4)

13-GAUGE GALVANIZED SOLID STEEL ENCLOSURES

These optional enclosure panels make the ramps look more finished, limit access to the underside of the ramps, and eliminate the accumulation of trash and debris under the ramps. (ASTM A1011/A653)



THICK 3/16" LASER CUT FRAMEWORK

By using laser table technology to cut our thick framework, we are able to hold incredibly tight tolerances which enables us to maintain perfect ramp geometry. This also ensures that each ramp section fits together perfectly for a seamless feel and appearance. (ASTM A1011/A653)



CNC PRECISION

All HD polyethylene and Ramp Armor® is pre-cut, pre-drilled and pre-countersunk on our CNC router to perfectly match the hole pattern of 1st layer of laser cut steel. (ASTM D638/D256)



HOT-DIP GALVANIZED GRINDRAILS

The galvanized coating ensures that even after years of grinding these areas will still look great and be free of rust. (ASTM A123)





Sample Designs

Download high-res images, videos and more of these designs at americanrampcompany.com



\$25K
85'x50'



\$50K
140'x55'
NIGHT VIEW



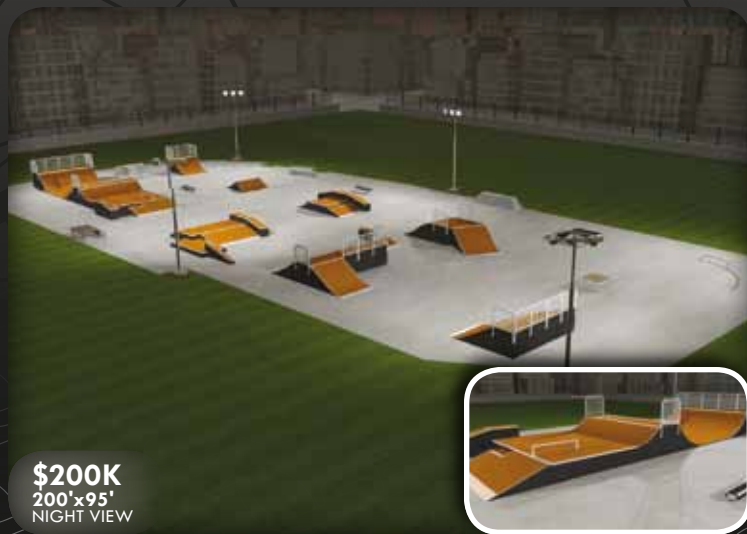
\$75K
95'x50'
NIGHT VIEW



\$100K
100'x70'



\$150K
110'x95'



\$200K
200'x95'
NIGHT VIEW

"We have worked with skate companies before, but have never experienced the quality from start to finish as we have with American Ramp Company." Janelle - Activities Director, IN

"American Ramp Company won the bid of our skate park and they were nothing short of fantastic to work with. In every aspect of our interaction with this company, from the top down to the installers, they were professional, courteous, knowledgeable and very caring of the product that they were offering." Rocky - Assistant Superintendant, Parks and Recreation Department, IN



stealth

Stealth Series takes the traditional lumber framed ramp and overhauls it using the latest in cutting edge technology and weatherproof materials. This product line could not be further from the classic wooden parks that were characterized by warped lumber and splintered surfaces. Once installed there is no exposed lumber and the framework is protected from

the elements. High Density Polyethylene and Skatelite Pro™ complete the riding surface making this a product that is attractive and one that your community will be proud of for years to come.

- RAMP ARMOR® OR SKATELITE PRO™ RIDING SURFACE
- HEAVY DUTY LUMBER FRAMEWORK
- CNC PRECISION COMPONENTS



1/2" HIGH DENSITY POLYETHYLENE SUBSTRATE

Our solid-core HDPE doubles the impact strength of the riding surface when compared to a foam core or plywood option. In addition, the high density polyethylene will not rot or delaminate like plywood making this the premium substrate for a classic build method. (ASTM D2561/D638)



2" X 6" LUMBER FRAMEWORK

We use a minimum 2" x 6" lumber framework on 8" centers for maximum strength and durability. In addition, we use an MCQ treatment which ensures corrosion resistance and is environmentally friendly. (ICC ESR-2325)



HOT-DIP GALVANIZED STEEL

All the steel on this ramp, from platform guards to toe plates, is galvanized after fabrication to ensure maximum corrosion protection. (ASTM A1011/A123)

1/4" RAMP ARMOR® OR SKATELITE PRO™ RIDING SURFACE

This resin baked, paper based material is used as the final riding surface and every piece is cut on our CNC router to ensure quality and accuracy. Both brands are available in your choice of either tan or black. (ASTM D638/D790)



GALVANIZED UNI-FORM COPING SYSTEM

We begin with a piece of steel plate and form it to have the same profile as 2-3/8" pipe. The 1/4" coping reveal is guaranteed since it is not dependant on the framework, which will expand/contract with the weather conditions. In addition, the riding surface is protected by steel behind and below the coping radius. (ASTM F2334-09-5.4)



STEALTH Series



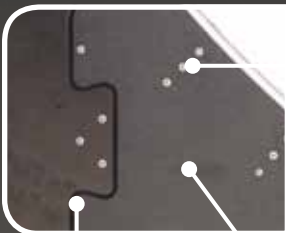
VERTICAL BALUSTER GUARDRAILS

Hot-dip galvanized steel guardrails are not only tough and corrosion resistant, but the vertical design increases visibility, allows airflow, and minimizes the likelihood of climbing. (ASTM F2334-09-5.1)



HOT-DIP GALVANIZED GRINDRAILS

The galvanized coating ensures that even after years of grinding these areas will still look great and be free of rust. (ASTM A123)



STAINLESS STEEL FASTENERS

Our fasteners offer the best strength and corrosion protection available to make certain your ramps can withstand the elements. (ASTM D1037-99/F593)

3/4" HD POLYETHYLENE SIDES AND ENCLOSURES

This incredibly strong material is inherently corrosion resistant. It encloses the equipment, leaving no exposed lumber and an attractive finish. (ASTM D792)

CNC PRECISION

All HD polyethylene and Ramp Armor™ is pre-cut, pre-drilled and pre-countersunk on our CNC router to exactly match the framework and for a perfect fit and finish. (ASTM D638/D256)



DO-IT-YOURSELF SKATEPARK KITS

With ARC's DIY kits, a small budget can still yield a big skate experience. These kits offer a unique opportunity to provide a professional quality product at a greatly discounted price and bring communities together through building the skatepark as a team. With kit options ranging from \$5,000 to \$15,000, delivered to your community, a new skatepark is very affordable. Check out americanrampcompany.com for sample designs.



- EASY ASSEMBLY
- CNC PRECISION
- RAMP ARMOR RIDING SURFACE

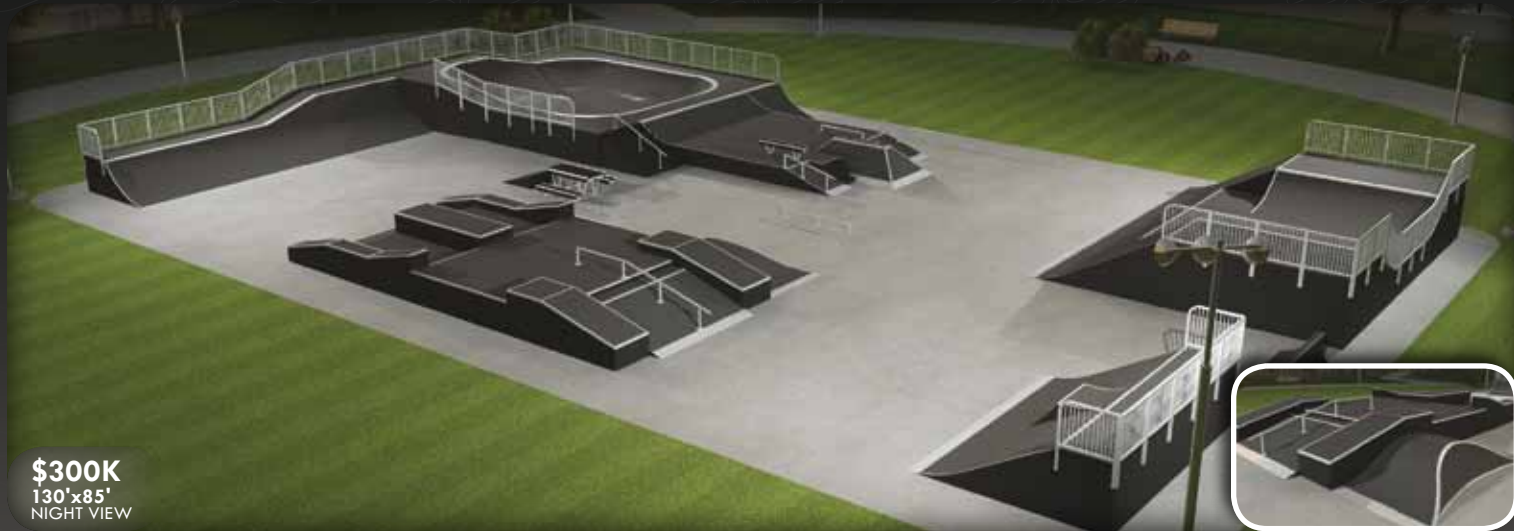
stealth
SERIES

Sample Designs

Download high-res images, videos and more of these designs at americanrampcompany.com



"From the inception of this project, ARC has offered their expertise, professional design team and construction staff to build a skatepark that has quickly become a favorite of local skaters and bikers. We have been very happy with ARC's commitment to our skatepark and highly recommend them to others seeking quality and professionalism." Brad - Wellness/Recreation Director, CA



\$300K
130'x85'
NIGHT VIEW



\$400K
150'x150'



SOLO^{G2}

MODULAR CONCRETE

Our Solo modular system could very well be the best of both worlds. Modular design that allows for reconfiguration and cost savings while at the same time using

a concrete riding surface with a dense feel and great traction. The years of worry free maintenance combined with the desired concrete riding surface, precast precision, and incredible concrete strength make this a hands down winner for many communities.

- 15-YEAR WARRANTY
- PRECAST PRECISION
- SOLID CONCRETE RIDING SURFACE



STAINLESS OR GALVANIZED COPING

Galvanized or stainless steel ensures that even after years of grinding, these areas will still look great and be free of rust. (ASTM F2334-09-5.4)



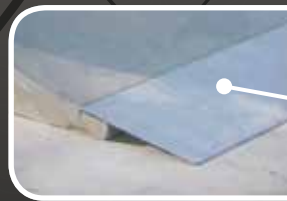
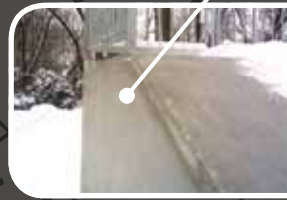
POOL COPING OPTION

You can now have pool coping on your above ground modular skatepark giving it a grassroots feel which previously could only be found in drained pools or costly inground custom bowls. (ASTM A1011/A123)



STEEL ADJUSTABLE LEGS OR INTEGRATED CONCRETE SUPPORT OPTIONS

The ramp support legs are adjustable and give our ramps complete modular ability making them adaptable for uneven surfaces. (ASTM 1011/A123) The other option is to go with an integrated concrete support system for a more permanent structure. (ACI 318)



FASTENER FREE TRANSITION PLATES

Our second generation Solo ramps feature transition plates that are not attached with fasteners which makes this a maintenance free zone. (ASTM F2334-09-5.7)



SOLO Above Ground Concrete

Municipality
Favorite!



VERTICAL BALUSTER GUARDRAILS

Hot-dip galvanized steel guardrails are not only tough and corrosion resistant, but the vertical design increases visibility, allows airflow, and minimizes the likelihood of climbing. (ASTM F2334-09-5.1)



PRECAST PRECISION

This means our radii, bowled corners, coping placement, etc. are perfect every time. Lumpy, wavy transitions are a thing of the past. In addition, hand finishing (not required with our technique) causes some loss of the entrained air which makes the concrete more susceptible to cracking through freeze/thaw cycles and can be problematic if over-finished. (ACI 304 R)



9000+ PSI CONCRETE

We have specifically formulated our concrete recipe with action sports in mind. Concrete becomes more brittle the harder it gets when tension (being pulled apart) forces are applied. However, because skateboarding exerts impact forces, rather than tension forces, we can increase the PSI to make it much stronger and more durable without jeopardizing the quality. The end result is an ideal skating surface, outstanding warranty, and the strongest ramps you can buy. (ASTM C109-28 days 9400 PSI/65MPa)



FACTORY DIRECT

We not only sell the product, but manufacture it too. This allows us to customize any portion of the product or mix design to fit your specific needs. We can change

aggregates, PSI, admixtures, etc. to easily tailor our equipment for your specific project and location.



MADE IN THE USA

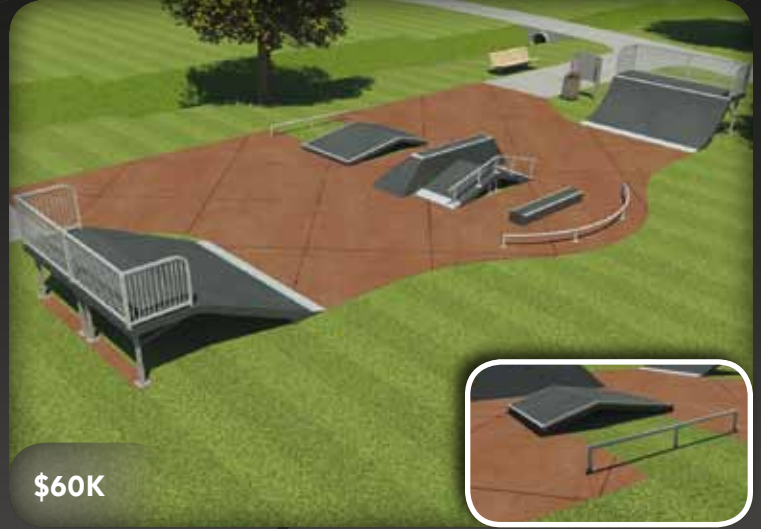
Solo ramps are the ONLY precast concrete ramps that are manufactured in the United States of America. Though there are other full service precast companies represented by US firms, their manufacturing facilities are located outside of the US and the product is imported. It is now more important than ever to keep our money at home and not send it across the border.



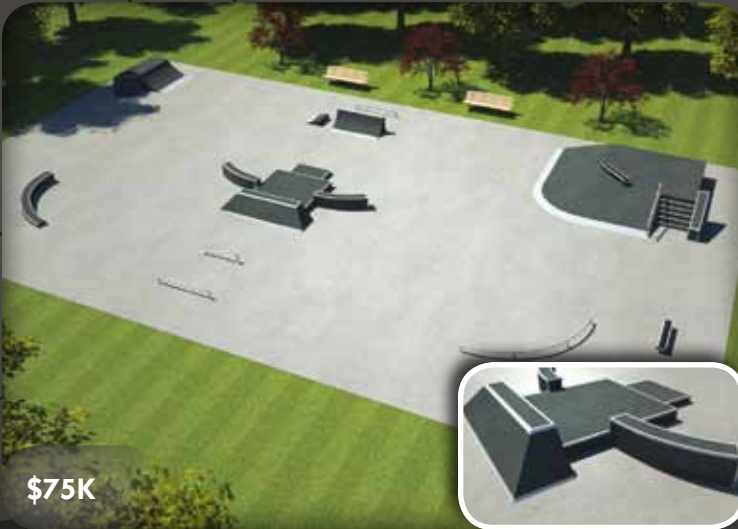
Download high-res images, videos and more of these designs at americanrampcompany.com



\$30K
NIGHT VIEW



\$60K



\$75K



\$100K
NIGHT VIEW



\$150K
NIGHT VIEW



\$180K
NIGHT VIEW

"I believe that the Solo products you supplied are of high quality and desirable to our users. The installation of the parks was very well planned and was completed within our requested timelines, we greatly appreciate this." Frank Laconte, OALA, ISA - Ontario

"From opening day, the Skate Spot has been a popular site for skaters of all ages... We will be calling on you in the near future when we are able to provide additional Skate Spots throughout our park system." Philip - Superintendent of Recreation Services, MD



\$240K
NIGHT VIEW



\$400K+
NIGHT VIEW



SOLO^{G2}

IN-GROUND CONCRETE

Gone are the days of high maintenance inground concrete skateparks that are hand finished and made with local ready-mix concrete. Solo precast

ramps have harnessed the technology that makes it possible for concrete to hold incredibly tight tolerances, double its normal strength, and dramatically increase its quality!

- 15-YEAR WARRANTY
- PRECAST PRECISION
- SOLID CONCRETE RIDING SURFACE

Additional Value

ENGINEERING

All of the ramps are pre-engineered so there is no need to pay for architectural and engineering fees related to the design. Our design work is free and we also have Professional Liability insurance coverage for your protection.

SCHEDULE

The construction timeframe is greatly reduced because the fabrication of the precast ramps occur in tandem with the site work. Once the ramps are set on site all that's left is to back-fill and install the flatwork to complete the job.

BUDGET

Precast equipment is priced by the piece making it much easier to match a design to your specific budget as compared to a poured-in-place cost per square foot. Once a design is determined, you can be sure the bids will come in at budget.

CUSTOMIZATION

We have hundreds (and growing) of precision engineered steel molds. Through our state-of-the-art engineering department, we have been able to create obstacles including but definitely not limited to bowls, bowled corners, stairs, and volcano hips.



STRENGTH

We have developed the perfect concrete recipe for skatepark equipment because that is all we produce. It is analyzed by our internal laboratory to ensure proper strength, air entrainment, slump,

and moisture content. Solo concrete is over 9000 PSI and is therefore guaranteed to outlast traditional poured-in-place parks. (ASTM C39)



SOLO In-Ground Concrete



RAMP PRECISION

Solo ramps are cast in laser-cut steel molds with laser table tolerances. This ensures perfect ramp transitions and finish with no waves or imperfections. (ACI: 117-960)



COPING REVEAL

Because the coping is incorporated into the precision mold, the placement and coping reveal is guaranteed to be perfect every time. (ASTM F2480-06.2)



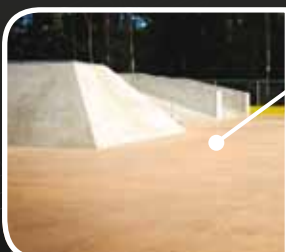
STEEL PROTECTION

Precast ramps have been pre-engineered so you are ensured of having steel protection everywhere the ramps will be abused to protect the concrete. (ASTM F2480-06.1)



SURFACE FINISH

Our self-leveling concrete enables us to obtain a perfect riding surface through the use of molds yielding a dense, smooth finish that cannot be reproduced with manual finishing processes. (ACI 302.1R-04 Class 9 Finish)



COLORED CONCRETE

Optional colored concrete used for the flat areas will increase the visual appeal of the skatepark while adding distinction. (ASTM C979-05)

SOLO^{G2}

IN-GROUND CONCRETE

Sample Designs

Download high-res images, videos and more of these designs at americanrampcompany.com



\$35K



\$65K



\$110K
NIGHT VIEW



\$150K
NIGHT VIEW



\$185K
NIGHT VIEW



\$250K
NIGHT VIEW



"We are very proud, thankful and in over all awe of the success of our park. It is everything we wanted and more." - Amy, Parks and Recreation Director, CT

"It was a very positive experience for the Town of Akron, and we are proud to have a facility designed and built by American Ramp Company in our community." Annette, City Administrator, CO



\$350K
NIGHT VIEW



\$400K+

Installation Process



POUR SUBSLABS



SET PRECAST RAMPS



POUR FLATWORK



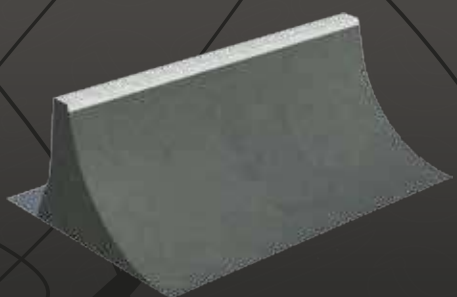
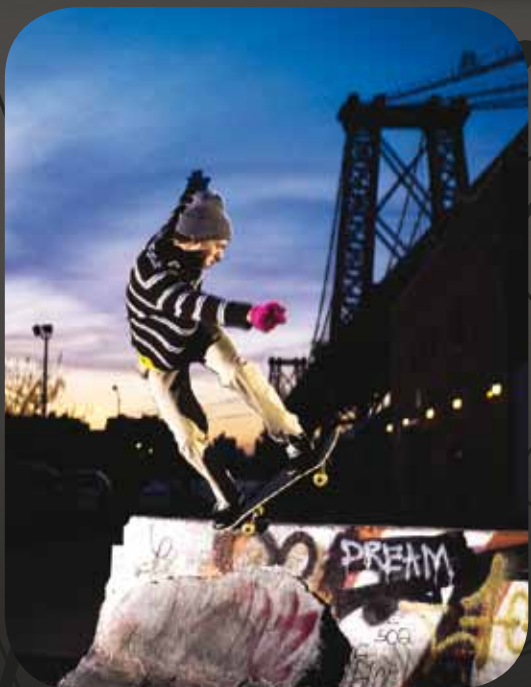
COMPLETED INGROUND
CONCRETE SKATEPARK
WITH PRECAST QUALITY

REPLICA Series



ARC President, Nathan Bemo getting exact measurements for Pier 7

- PRECAST CONCRETE
- 15-YEAR WARRANTY
- PERFECT SKATEPARK UPGRADE



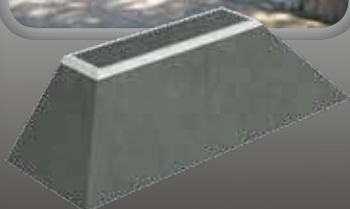
JERSEY BARRIER
Roadway Construction

The Replica Series takes the most famous skate spots in the world and brings them to your city.

There are a handful of famous skate spots located around the globe that are regularly featured in skate magazines and videos. Most skaters will never have the opportunity to travel to a faraway destination to skate any of these legendary spots. So we have developed our Replica Series equipment which duplicates these sites exactly down to the precise angles and dimensions. It is now possible to bring these coveted skate spots to your local skatepark. Though we have not changed the dimensions of the original spots, our engineers have improved the structural durability to withstand the abuse that skateboarding causes on equipment. Our Replica Series equipment can be incorporated into master plan designs or can easily be added to existing skatepark facilities to expand the skating experience.

REPLICA Series

PERFECT FOR CREATING A NEW SKATE SPOT OR DROPPING INTO YOUR EXISTING SKATEPARK



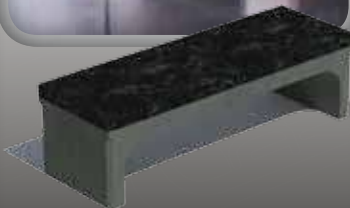
LA HIGH BANK
Los Angeles, CA



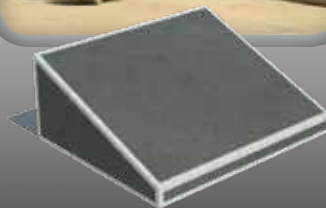
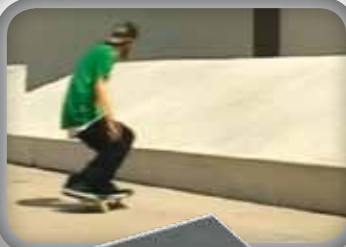
SAN JOSE UPLEDGE
San Jose, CA



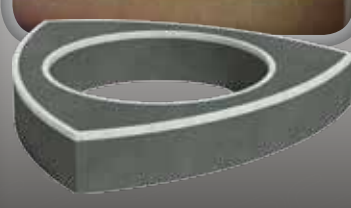
PIER 7
San Francisco, CA



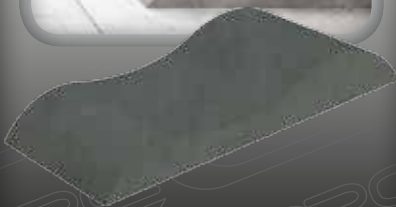
MARBLE BENCH
Las Vegas, NV



CRUZ SLANT PAD
Los Angeles, CA



TRIANGLE LEDGE
Barcelona, Spain



DRAGON BACK
China



CHINA BANKS
San Francisco, CA



HUBBA LEDGE
Anywhere, USA

Q: What is the best product line?

A: Because we offer every build method, we don't push one over the other. We will present you with all of your options and work with you to determine the best build method for your community. However, it is noteworthy that most municipalities prefer the Pro Series and the Solo Series product lines because of their long warranty and reduced maintenance.

Q: How much do you charge for your design services?

A: We offer our design services at no charge. Because we are the largest skatepark builder in the world we are able to extend these services at no cost to our clients, saving them design fees, and allowing them to get more skatepark for their budget. Simply give us a call and one of our skatepark specialists will be happy to meet with you and your local riders to begin working on a custom skatepark layout designed specifically for your community.

Q: Does having a skatepark increase our city's liability exposure?

A: Skateparks offer less liability exposure than many other common forms of recreation. Most government entities are protected from liability claims provided they are not deemed grossly negligent. As long as you choose to work with an experienced skatepark builder that has proper insurance coverages in place, liability should not be an issue.

Q: What insurance does ARC carry and why?

A: \$10M in product and \$1M professional liability insurance. Product liability covers claims that may stem from a product failure. Professional liability covers claims caused by professional negligence such as designing a park that is unsafe. It is crucial that any skatepark company you work with have both of these coverages in place with adequate limits to cover their products, themselves, and their customers.

Q: Should we use concrete or asphalt for our pad?

A: It depends on the situation. The pad is merely a means to what the skaters really want—ramps. Our first recommendation is locate an existing pad such as an unused basketball or tennis court. If an existing site can be used, all of the money that would have gone to a pad can go towards more equipment. If a new pad must be poured, concrete is preferable as long as the cost of pouring concrete does not consume so much of the budget that the skatepark ends up looking like a skate pad. In this case, asphalt can be much more economical and allow more budget for ramps and skate elements.

Q: Do you offer concrete specifications that we should use for our skatepark pad?

A: We can provide general concrete pad specifications for your skatepark. Depending on your site and region there could be some specific considerations that you should discuss with your local concrete contractor or engineer.

Q: Can ARC help with grants/fundraising?

A: American Ramp Company offers its own skatepark equipment grant and can provide assistance in securing additional grants. Contact a skatepark specialist for details. ARC also matches the Tony Hawk Grant dollar for dollar in additional equipment.

Q: Do you have local representation?

A: Yes, our factory skatepark specialists can meet with your community

anytime. We are always visiting our existing skateparks and meeting with new customers to talk about upcoming projects. Doing business factory direct means better service, more knowledgeable staff, and no 20-30% mark up associated with buying from a third party. Call one of our skatepark specialists and set up a meeting—we would love to discuss your project.

Q: Skateboards only or BMX too?

A: All of our product lines are engineered for skateboards, inline skates, and BMX bikes.

Q: How much does a skatepark cost?

A: We build custom skateparks to meet any budget. From small skate spots to world class competition style parks, we can design and build anything our customers can imagine. For ideas, check out the sample designs in this catalog or on our website. www.americanrampcompany.com

Q: How does a steel skatepark compare with a pour-in-place concrete skatepark?

A: Both construction methods are going to last a long time. Here are a few things you should consider. 1) Neither poured-in-place concrete or steel is maintenance free. 2) The cost of a concrete skatepark is going to be many times more than steel. Often you can get a complete steel park installed for the same amount that a concrete design alone could cost. 3) We have visited many parks that local concrete contractors or cities have built and have seen wavy transitions, misplaced coping, and incorrect radii. If you go with a concrete park, you must go with a professional skatepark builder who has professional liability insurance and require a performance bond. 4) Concrete parks cannot be modified or moved if the need ever arises. 5) With an all steel park you can get a more versatile park, more equipment, at a lower cost and still avoid maintenance issues common with other materials.

Q: Isn't a steel riding surface slick?

A: No. Steel would be slippery if it were painted with a standard paint. However, we use a custom MaxGrip™ TGIC polyester powder coat on all our riding surfaces to give them perfect traction, even when the ramps are wet.

Q: Isn't steel too loud as a riding surface?

A: Whether the riding surface is all steel or Skatelite Pro™, all approach plates (metal areas that join the ramps to the ground) are made of steel and this is where most of the noise is generated. Furthermore, if you desire the maintenance free benefits of a steel surface and sound is a major issue, we can add a sound dampening material to our Pro Series or you can go with our X-Series with a steel riding surface. Though the steel is not nearly as loud as many would expect, it is important to note that the quietest option of all is the Solo concrete ramps.

Q: Why should we go with American Ramp Company?

A: We regularly get calls from people who tell us how refreshing it is to find a company so in tune with skateboarding, inline, and BMX trends and whose designs and construction reflect their experience. We believe it is our product knowledge, consistent quality, competitive pricing, and dedication to customer service that has made ARC the world's largest skatepark provider.

ARC Sustainable Practices



At American Ramp Company we take pride in our commitment to providing the highest quality skateparks possible. As the leader in the skatepark industry, we recognize that it is our responsibility to set an example as an environmentally conscientious company.

We have invested considerable time and resources identifying aspects of our business that we can alter in order to maximize our customer satisfaction while minimizing our environmental impact. We hold firm to the belief that focusing on building

the highest quality, longest lasting skateparks will insure the least environmental impact. By building skateparks right the first time, we help ensure that resources won't needlessly be used to replace or repair in years to come.

Green Skate is an initiative set forth to create baseline standards for sustainability in the production and maintenance of skateparks. As one of the founding members of Green Skate, we have adopted a policy of evaluating the environmental impact of every decision we make.



American Ramp Company
601 S. McKinley Avenue
Joplin, MO 64801-3220
USA

The World's Largest Skatepark Provider



ARC

800.949.2024
www.americanrampcompany.com

Toll Free: 800-949-2024
International: 417-206-6816
Fax: 417-206-6888
info@americanrampcompany.com

